

CITO SNAP PRESSER

Reliable holding down of the edge and double-cut waste

- Fast and easy handling
- No additional drilling, screwing or gluing
- Low and compact design

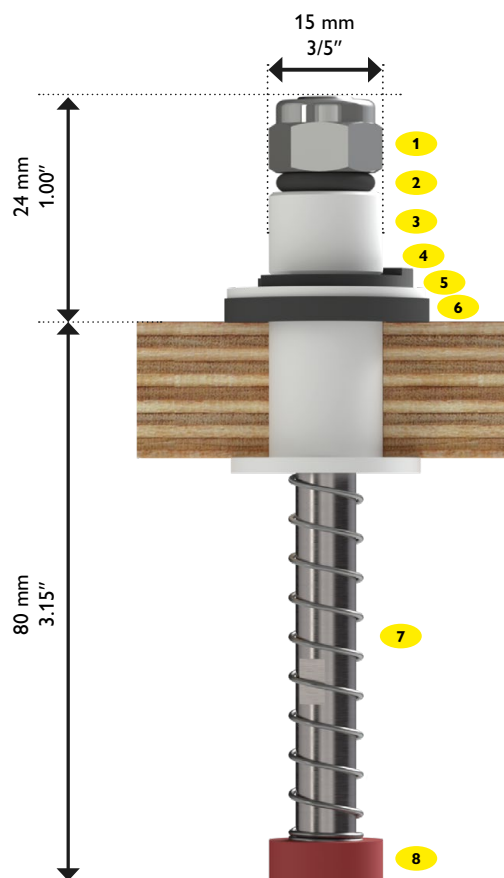


For further information on
the CITO SNAP PRESSER:
www.cito.de/snap-presser

Description	Unit	Order no.
CITO SNAP PRESSER SPOT incl. spare parts package rings	50 pcs.	BKP00001
CITO SNAP PRESSER RAIL for T-rail incl. STOPPER + pack of spare rings	50 pcs.	BKP00002
CITO PRESSER RAIL for CITO SNAP PRESSER RAIL, Length 1500 mm 59.06"	10 pcs.	BKP00008
Gasket for CITO PRESSER RAIL 650 × 12.5 × 3 mm	25 pcs.	BKP00009

Basic element

Universal holddown for upper blanking tools. For holding the edge grid and the inner double-cut.



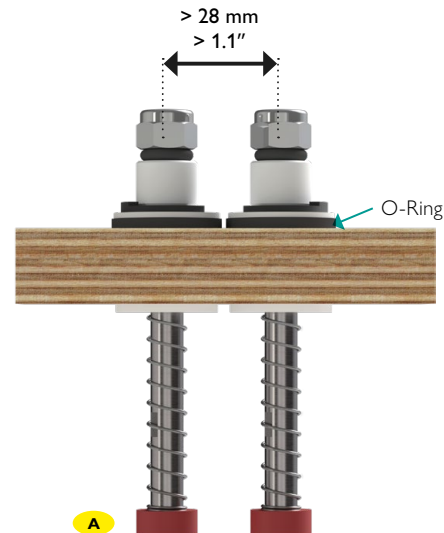
- 1 Self-locking nut for height adjustment
- 2 Rubber O-ring as buffer
- 3 Pin guide made of POM
- 4 Circlip
- 5 Spacer ring
- 6 Compensation ring for wood thickness
- 7 Spring element
- 8 Rubber presser

Variants

CITO SNAP PRESSER SPOT

A Rubber foot

The CITO SNAP PRESSER can be used directly, without any special preparations. Thanks to the narrow design, it is possible to set the CITO SNAP PRESSER very tightly. The special design ensures extremely efficient use. This generally removes the need to use profile rails.



CITO SNAP PRESSER RAIL

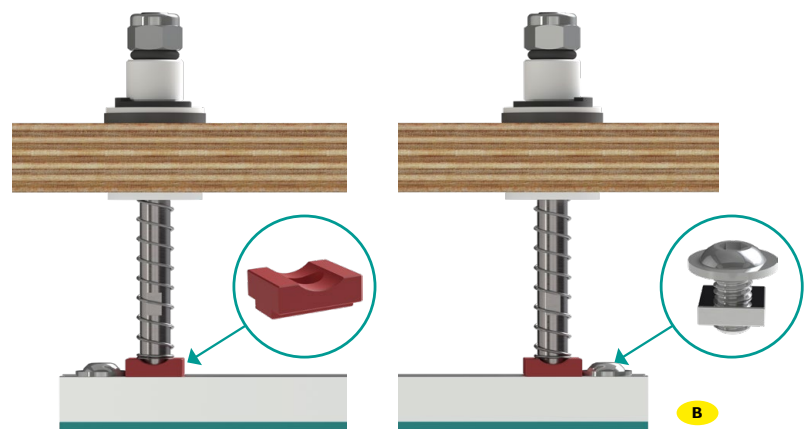
B Profile rail

Preparation with CITO PRESSER RAIL profile rails:

- Shorten the profile rail to the required length.
- Insert the foot of the CITO SNAP PRESSER RAIL into the profile rail and also insert a stopper.
- Push the second CITO SNAP PRESSER RAIL onto the profile rail and secure with a stopper on the other side.

The CITO SNAP PRESSER RAIL has a movable element at the end of the foot to prevent canting.

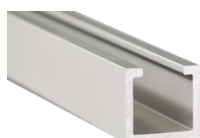
We recommend rubbering the underside of the CITO PRESSER RAIL using the rubber lining for CITO PRESSER RAIL to give the rail additional grip.



CITO SNAP PRESSER
with movable foot in the
CITO PRESSER RAIL



CITO PRESSER RAIL
with stopper



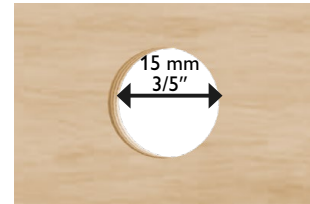
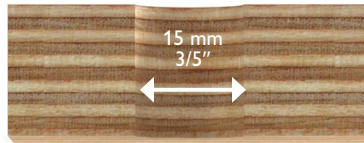
CITO PRESSER RAIL
(BKP00008)



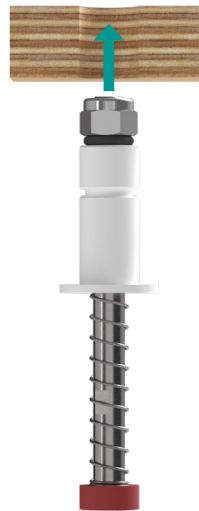
Gasket for
CITO PRESSER RAIL
(BKP00009)

Use

1. Cut, laser or drill a hole with 15 mm diameter in the wood.



2. Fit the CITO SNAP PRESSER through the hole from underneath.

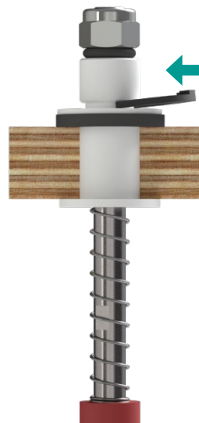


3. Clamp the CITO SNAP PRESSER with a circlip. Only one **click** – done!



Additional ring

NOTE: If you use 16 mm (5/8") instead of 18 mm (3/4") plywood, you must place the enclosed **additional ring** under the plywood.



No additional drilling, screwing or gluing.

